

# NEW PACIFIC

TRADING & CONTRACTING W.L.L



**ICV**  
IN-COUNTRY VALUE  
CERTIFIED



**نيو بيسيفيك**  
للتجارة والمقاولات ذ.م.م

## COMPANY PROFILE



+974 507 507 65



P.O. BOX NO : 214071  
DOHA - QATAR



info@nptcwll.com



www.nptcwll.com

- GENERAL INFORMATION ABOUT COMPANY
- INTRODUCTION
- ISO 45001:2018, ISO 9001:2015 & ISO 14001:2015
- REGISTRATION / COMMERCIAL LICENSE DETAILS
- LIST OF PROJECTS

## GENERAL INFORMATION ABOUT COMPANY

NAME OF COMPANY	:	NEW PACEFIC TRADING & CONTRACTING W.L.L.
YEAR OF ESTABLISHMENT	:	2018
CONTACT PERSON	:	MR. JAWAID ALAM SIDDIQUI - GENERAL MANAGER
POSTAL ADDRESS	:	P.O. BOX : 214071
TELEPHONE NO	:	+974 - 50750765
E - MAIL	:	jawaid@nptcwill.com
OFFICE LOCATION	:	Muntaza Trading Center , Muntazah, Doha - Qatar





## MAJOR ACTIVITIES

- ◆ Land filling, Excavation, Compaction, leveling
- ◆ Blinding, Form work, Casting, Precasting, Shuttering
- ◆ Bar Bending,, Steel Reinforcement
- ◆ Building Construction
- ◆ Design, Supply & Erection of steel structures
- ◆ Built - up sections (from plates for heavy sections)
- ◆ Roofing Systems & Cladding Installation & un-installation
- ◆ Hard Landscape / Soft Landscape, Maintenance Works of Landscape work
- ◆ General Cleaning Services





## COMPANY'S MISSION

**" To Provide Professional, Effective  
& High Quality Services under One Roof for the  
Satisfaction and Expectation of  
our Valued Clients"**

## OUR BUSINESS CONCEPT

Create more harmonized new life space by following ethical business practices and pursue corporate governance with a concern of community development.

## OUR STRENGTHS

In depth expertise in developing cost effective solutions, time bound delivery policy and introducing new technologies.

In each core competency area, we have a technical working group, which identifies and analyses the technology innovations, Appropriate technologies identified assimilate through internal development programs.

Through years of experience, we have gained the knowledge to provide most precise to the point solutions possible

we focus mainly on customer satisfaction and will do everything possible to make all activities excellent.

Prominent has been able to develop and maintain a work and success together business relations with its clients.

we have well known and reputable suppliers spread all around the world for our material requirements. This will help us to procure high quality. products at the most competitive prices on a global basis.





## QUALITY POLICY

New Pacific is a ISO 9001:2015 Company "Highest Quality" is the guiding principle of prominent and its businesses. We provide our national and international clients with world-class technological products and services which help them improve their productivity and service for end users. We foster people-oriented corporate culture and create an environment which encourages constant learning, innovation and team work that bring out the best in our employees. Marking the most appropriate and state-of-the-art technology available to our clients for the least cost is the corner stone of our business philosophy. We are committed to provide the best possible goods and services to our trust-worthy clients around the world.



## SAFETY

Safety is one of the most important subjects where top most attention is given during entire execution of project.

Prominent safety department has identified through "Zero Accident Policy"

- ◆ How to Prevent an Accident;
- ◆ Eliminate unsafe actions
- ◆ Eliminate unsafe conditions
- ◆ Discover the causes

Safety achieved by adhering to strict safety management & procedures.





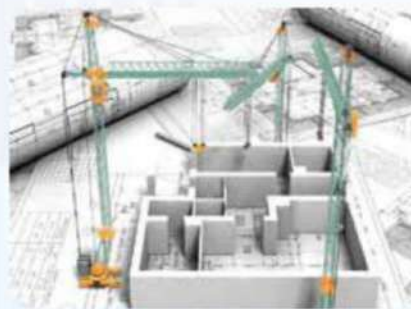
New Pacific was formed with the objective of establishing a sustainable and continually improving organization to provide predictable and quality constructions to our clients while concurrently fostering lasting relationships emphasizing on core values of integrity, commitment, dedication and strive for Client satisfaction as the key for success in this market.

We pride ourselves on the knowledge, skills and expertise of our employees who work together as a team delivering successful projects. Valuing the importance of relationships, we have a collaborative approach that is flexible and can respond quickly to the needs of our Clients.

We have currently diversified our Construction & Customer services in following sectors , with proven track record of both completed works and progressing works.



- ♦ Supply & Erection of Steel structures
- ♦ Fabrication & Installation of Steel Structures
- ♦ Warehouse/Factory Constructions
- ♦ Architectural Steel works
- ♦ Refurbishment/Maintenance of Steelworks
- ♦ Staircase & spiral stairs, Gates & grills
- ♦ Canopies, Skylights

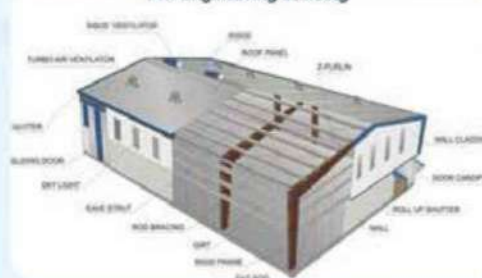


- ♦ Building Construction (Sub-Structure, Super structure & Finishing)
- ♦ Refurbishment works
- ♦ Tiles laying, Block work, water proofing, Gypsum partition, Gypsum Ceiling, interior finishing, bar bending works for roof & beams, Fitout jobs, etc.



- ♦ Fabrication & Installation ACP cladding
- ♦ Fabrication & Installation of Aluminium & Glass windows, doors, partition, curtain wall etc.
- ♦ MS & Stainless steel handrails, all type of decorative hinged & sliding gates.
- ♦ Aluminium & glass partition

Pre-Engineering Building



- ♦ Roofing system & Roofing repair
- ♦ Uninstallation & installation of roofing
- ♦ Portal steel structure
- ♦ Fabrication & installation of staircase
- ♦ Single & spatial steel truss
- ♦ Cold store panel installation
- ♦ Engineering services



## GENERAL CONSTRUCTION

We have diversified General Construction Team comprising of skilled and expertise personals to execute the Civil Construcion works, MEP works, MEP Maintenance work Our General Construction have a diversified jobs comprising the following :-

- ◆ Building Construction
- ◆ Shop Fit out jobs
- ◆ Flooring Work, Tile laying, Block works
- ◆ Bar bending works, Steel Reinforcement work
- ◆ Refurbishment works, Painting Work
- ◆ General Cleaning Services

General Construction, Cleaning services, MEP & Maintenance works are carried out by efficient and reliable work force with adequate skills and expertise.





# WATERPROOFING

## MAIN APPLICATIONS

Sub-structure membrane systems

Roof Waterproofing

Liquid applied membranes

Waterproofing admixtures

Bitumen Membranes

Waterproofing mortars

Waterproofing Injections

Waterproofing Tapes





## INTERIOR FIT OUT WORK

Glass, Gypsum, Wooden, Metal partition

Brick/Concrete partition

Cubical for offices

MDF Panel, Gypsum, Acrylic Panel Ceilings

Aluminum Work

Glass Work

Plaster of Paris work

Painting

Celotex Tile, Metal Panel Ceiling(with/  
without designs)

Grill Panel Ceilings





## MECHANICAL & STEEL FABRICATION WORKS

NEW PACIFIC is committed to providing quality, Onshore /offshore fabrication services that meet international quality standards and products that meet the specifications and requirements of the industry, and the general engineering sector. We are specialized in workshop fabrication and installation of structural steel including steel equipment's, its components, plate work, and bridge girders for the oil, gas & mining industries, welding, general engineering fabrication & machining, fabrication of skids and metering sets in full compliance with ISO 9001 and API Spec. Q1 quality management systems.

NEW PACIFIC has become one of the single-source structuration fabrication and construction firm , working with a highly skilled and well-trained multi-national workforce who have proven competent to deliver each project with the highest quality and provide prompt 24/7 services with hi-tech standards.







## Welding , Blasting & Painting Activities

We are highly skilled and qualified team coupled with advanced technologies and equipment for Manual Grit/ Sand Blasting & Painting activities in shop and site for CS pipes and steel structure. We are specialized in abrasive blast cleaning of steel structures and applying protective coatings according to NACE and SSPC.







## Internal Blasting & FBE Activities

We are highly skilled and qualified team coupled with advanced technologies and equipment for Manual Grit/ Sand Blasting & FBE (Fusion Bonded Epoxy) on joints and CS pipes. We are specialized in abrasive blast cleaning of steel structures and applying protective coatings according to NACE and SSPC.



## Mechanical Piping & Pipeline works

We are highly skilled and qualified team coupled with advanced technologies and equipment for Fabrication, Installation & commissioning of Station piping. Pumps, heavy equipment and cross-country pipeline works.





## REGISTRATION/ COMMERCIAL LICENSE

وزارة التجارة والصناعة  
Ministry of Commerce and Industry  
State of Qatar - دولة قطر

إدارة التسجيل  
والتراخيص التجارية

مستخرج بعض بيانات السجل التجاري

تاريخ الطابعة: 02/11/2024

رقم السجل التجاري: 125869  
الاسم التجاري: نيو بيسيفيك للتجارة والمقاولات  
تاريخ انشاء السجل: 19/11/2018  
الشكل القانوني: شركة ذات مسؤولية محدودة  
حالة السجل: نشط  
عدد الفروع: 0

رقم التسجيل الضريبي: 5000338152  
الصفة التجارية: رأس المال: 200000  
حسية المنشأة: قطر  
رقم قيد المنشأة: 17-1713-63

معلومات الاتصال  
أرقام الاتصال: +974507507 البريد الإلكتروني: [info@nptcwll.com](mailto:info@nptcwll.com)

الشركاء

الاسم	رقم الإثبات	رقم السجل	الجنسية	النسبة	الحالة
خالد عالم	27135622621	الهند	49	نشط	
عبد الرحمن عبدالله فضل غاني	29163403528	قطر	51	نشط	

المدراء (المكونين بالتوقيع)

الاسم	رقم الإثبات	رقم السجل	الجنسية	الصفة (الملاحقة)
خالد عالم	27135622621	الهند		مدير (ملاحقة كاملة ومطلقة)

رقم الصفحة: 1 من 2  
رقم السجل: 125869  
QATAR CHAMBER

تشهد غرفة تجارة وصناعة قطر بأن المنشأة المذكورة اعلاه مسجلة في سجلات  
Qatar Chamber certifies that the above mentioned establishment has been registered

وزارة التجارة والصناعة  
Ministry of Commerce and Industry  
State of Qatar - دولة قطر

إدارة التسجيل  
والتراخيص التجارية

رخصة تجارية

تاريخ الطابعة: 2024/11/02  
صفحة رقم: 1 من 1

رقم الرخصة: 163299  
الاسم التجاري: نيو بيسيفيك للتجارة والمقاولات  
نوع المنشأة التجارية: شركة ذات مسؤولية محدودة  
الاسم التجاري: 125869

بيانات المبرر المسؤول:  
اسم المبرر المسؤول: جاجيد عالم  
رقم الإثبات: 27135622621

بيانات الموقع:  
نوع الموقع: تجاري  
المنطقة: مكتب تجاري  
الشارع: 24  
رقم الشارع: 830

الأنشطة التجارية:

الرقم	اسم النشاط
4752801	التجارة في مواد البناء
4100001	الانشاءات والمقاولات العامة

رقم السجل التجاري: 125869  
الاسم التجاري: نيو بيسيفيك للتجارة والمقاولات  
تاريخ انشاء الرخصة: 28/11/2018  
تاريخ انتهاء الرخصة: 21/11/2027  
رقم السجل التجاري: 125869

عنوان رقم: 16  
رقم الدور / الوحدة: 6  
اسم مالك العقار: حسن شكري حسين  
نوع الرخصة: 24  
وصف العنوان: تجاري

مدير إدارة التسجيل والتراخيص التجارية

وزارة التجارة والصناعة  
Ministry of Commerce and Industry  
State of Qatar - دولة قطر

إدارة التسجيل  
والتراخيص التجارية

مستخرج بعض بيانات السجل التجاري

الأنشطة التجارية

الرقم	اسم النشاط
4752801	التجارة في مواد البناء
4100001	الانشاءات والمقاولات العامة

رقم الصفحة: 2 من 2  
رقم السجل: 125869  
QATAR CHAMBER

تشهد غرفة تجارة وصناعة قطر بأن المنشأة المذكورة اعلاه مسجلة في سجلات  
Qatar Chamber certifies that the above mentioned establishment has been registered

ضريبة  
Dhareeba  
tax portal

24/08/2020

TAX CARD - بطاقة ضريبة

The General Tax Authority of Qatar certifies that the entity is registered as per the following details:

رقم التعريف الضريبي: 5000338152

اسم المكلف: نيو بيسيفيك للتجارة والمقاولات

NEW PACIFIC TRADING AND CONTRACTING

رقم السجل التجاري: 125869

Commercial Registration Number: 125869

Address (Headquarter): Zone: 27 المنطقة Building: المبنى شارع: عمر بن الناصر Street: قطر Qatar

Main Activity: 4100001-الانشاءات والمقاولات العامة - 4100001-construction and general contracting

Legal Form: شركة ذات مسؤولية محدودة Limited Liability Company

Activity Commencement Date: 19/11/2018

عدد الفروع: 0

الضرائب المسجلة: Registered taxes:

Income Tax: REGISTERED - 19/11/2018 - مسجل

الضريبة على الدخل

الهئية العامة للضرائب  
GENERAL TAX AUTHORITY

هذه الوثيقة مستخرجة من النظام الآلي و ليس من الضروري التوقيع عليها  
This is a system generated document and does not require to be signed.



# ISO & Qatar Chamber of commerce



## PROJECTS COMPLETED

### PROJECT :

#### WATER FACTORY AT IND. AREA

**Location** : Water Factory at Street No.3, Ind. Area

**Area** : 3200 sq.m

**Consultant** : Gulf Consulting Group

#### Scope of works : -

1-Supply & Installation of steel  
Canopy & Sandwich panel wall  
Cladding





## PROJECTS COMPLETED

### PROJECT :

#### EZDAN PALACE HOTEL

Location : Graffa, Doha - Qatar

Area : 2800 sq.m

Consultant : MZP

#### Scope of works : -

1-Fabrication & installation of steel structure & roofing  
System at Banquet Hall, Lobby & Main Entrance



## PROJECTS COMPLETED

### PROJECT:

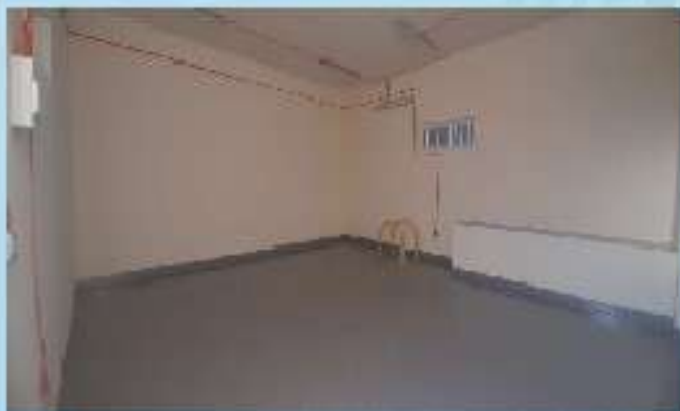
**Kahramaa , Sub-Station Work**

**Location : Farm 62 - Al Selimi, Zubara Road**

### Scope of Work :-

**Construction of Complete Sub-Station**

**Work includes: Civil and MCCC Electrical Works.**





## PROJECTS COMPLETED

### PROJECT:

**Kahramaa , Sub-Station Work**

**Location : Al-Sadria, Shamal Road ( Kabaan)**

### Scope of Work :-

**Construction of Complete Sub-Station**

**Work includes: Civil and MCCC Electrical Works.**



## PROJECTS COMPLETED

### PROJECT :

#### MILAHA

Location : Industrial Area  
Area : 780 sq.m  
Client : United Truck Spare Parts

#### Scope of works : -

- 1 - Shop Fit out Job
- 2 - Complete civil works





## PROJECTS COMPLETED

### PROJECT :

#### DOHA DRUG STORE

Location : Industrial Area, St: 35

Area : 1200 sq.m

Consultant : Doha Design Centre

#### Scope of works : -

- 1 - Design, Supply & Installation of Pre Engineered Steel structure, Roofing & Wall Cladding System from Kirby
- 2 - Construction of office block



## PROJECTS COMPLETED

### PROJECT :

Aluminium Works in Hamad Hospital

Location : Rumaillah Campus

Area : Al Sadd

Consultant : Stud

### Scope of works : -

1 - Design, Supply & Installation of Pre Engineered Steel structure,  
Roofing & Wall Cladding System from Kirby





## PROJECTS COMPLETED

### PROJECT :

Twin Tower P-1083

Location : West Bay Doha

Area :

Consultant :

### Scope of works : -

installation of Granite cladding & Paving, Hardscape Work at Podiums



## PROJECTS COMPLETED

### PROJECT :

Construction of Car Workshop, Office and Accommodation

Location :

Area :

Consultant : Al Saad Engg. Consultant

### Scope of works : -

- 1- Design, Supply & Installation of pre engineered steel structure, roofing & wall cladding system
- 2 - Construction of office block & labour accommodation 3
- 3 - Extenal works & Finishing



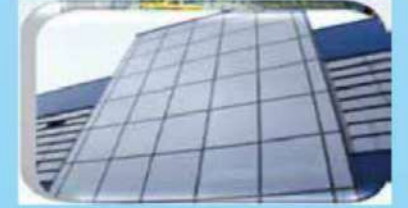


## PROJECTS COMPLETED

Quality is not the only factor which proves the competency in the market, there are other factor involves too; Time management, honesty, integrity, market knowledge, cost efficiency and much more. Our services keeps all parameters in mind when it comes to delivery of work.

We analyse our Clients requirement, we study the market, and after apposite planning, and analytics comes the execution.

We always ensure the following Plan, Do ,Check & Act to assure our Clients and end users receive always the best of our services to their satisfaction.

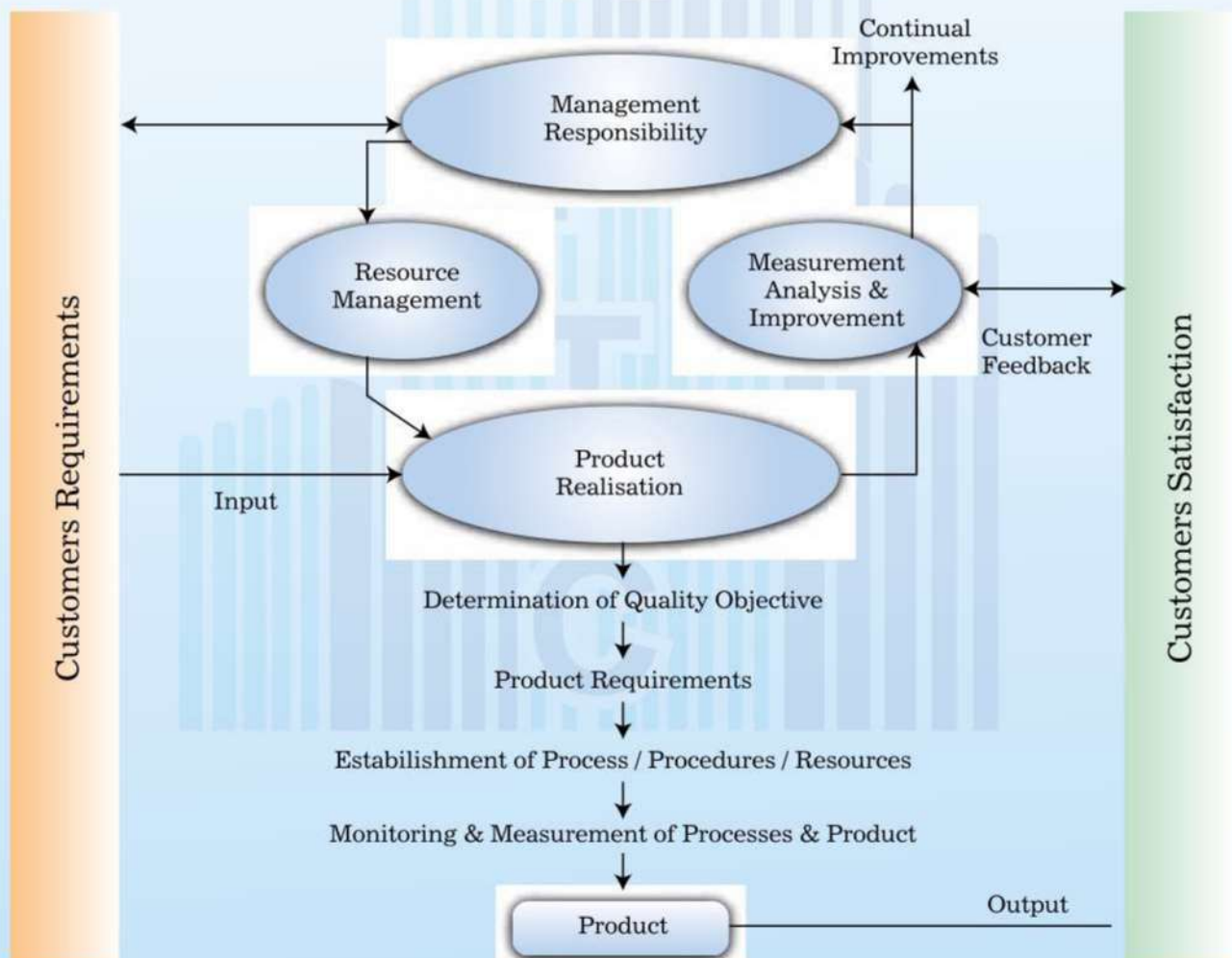


### 1.3.0 Control of Quality Records

In order to establish evidence for the implementation of quality system, records are created at different stages and maintained. These records are the evidence for systematic quality management in the operation of the company. These records are reviewed periodically to identify the weaknesses in the system and hence to initiate actions to prevent them.

A documented procedure is established for the identification, storage, retrieval, protection, retention time and disposition of various quality records. The retention period of records is defined based upon their importance.

**QMS Process Flow Chart**





## PPR-CT PIPES & FITTINGS, PVC GARDEN HOSES



40  
years experience

UPLAST was established in 1977 in Istanbul and has factories in Istanbul-Sancaktepe and Yalova. It's products include; PPR-C Installation Pipe and Fittings, PVC waste water pipe fittings, PVC soft watering hoses, spiral suction & discharge hoses and jacuzzi hoses, roof & rain gutters and fittings, PE underground watering pipe.

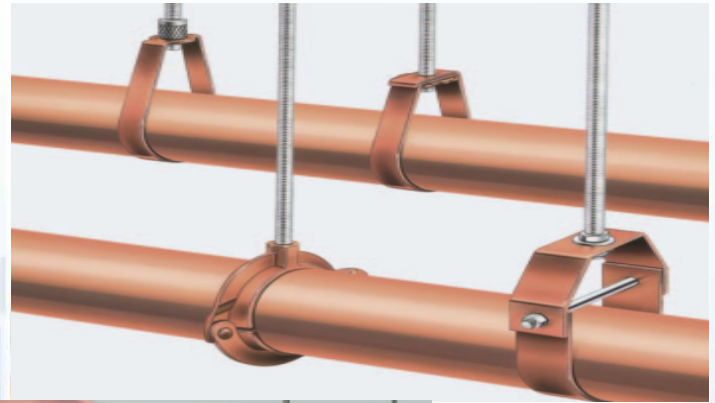




## FIXING CLAMPS & PIPE SUPPORT



Gripfix pipe clamps provide the perfect solution, regardless of the type of pipes to be fixed: plastic or heating pipes, heavy-duty pipes, pipes for sprinkler systems, folded spiral-seam pipes or pipes that have to withstand extreme temperatures.

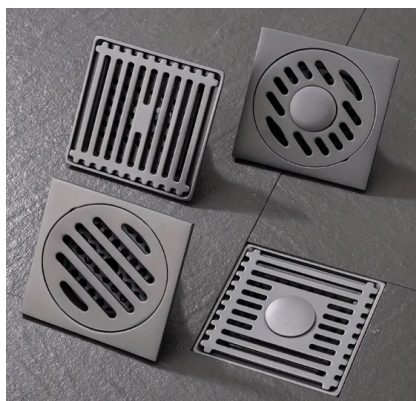




## STAINLESS STEEL KITCHEN SINK, STAINLESS STEEL FLOOR DRAIN & GRATINGS, SS & BRASS FAUCETS, MIXERS & SHOWER SET



Asahi is a provider of a wide range of premium quality stainless steel kitchen sinks, mixers and floor gratings. Asahi offers elegant and functional designs that blend with your kitchen for an appealing and aesthetic look. Unmatched quality that is long lasting backed with excellent customer service make Asahi the preferred supplier in the region. Well accepted all over U.K.





## ADHESIVES & LUBRICANTS

Arrow Adhesives is a pioneer in the solvent cement industry and has specialized in manufacturing solvent cements, primers and cleaners for joining PVC, CPVC and ABS plastic pipe for over 50 years. Arrow has a long tradition of engineering excellence and innovation that it is proud to provide to you through their complete line of Arrow brand products.



### PVC SOLVENT CEMENT PVC Heavy Body Cement



#### 1104HB - Green Label

- ✓ For all types of PVC through 12" diameter, including schedule 80.
- ✓ Medium setting.
- ✓ Clear or Gray color.
- ✓ Meets ASTM D-2564.
- ✓ Listed in NSF and UP Code.
- ✓ Meets LOW-VOC requirements.



#### 1104HD - Extra Heavy Body (High Pressure)

- ✓ Industrial Strength for all PVC pipe and fittings up to 30" diameter.(including Schedule 80)
- ✓ Meets and exceeds performance standards for ASTM D2564
- ✓ Meets LEED requirements for "Low-Voc" products
- ✓ Medium to slow setting which allows time for product to be applied to large diameter piping systems
- ✓ Clear Color
- ✓ Extra Heavy body thickness which provides for gap filling capabilities
- ✓ Aggressive formulation to ensure permanent solvent welded joints



#### Lubricant for gasketed pipe joints A-15)

- ✓ For use on all gasketed piping systems.
- ✓ A-15 is a non-toxic, no taste or odor paste and 100% water soluble.
- ✓ Does not support bacterial growth.
- ✓ NSF listed.



#### Cleaner for PVC, CPVC and ABS 901 - Yellow Label)

- ✓ For use on all classes and schedules of PVC, CPVC and ABS plastic pipe and fittings.
- ✓ Cleans and removes oil and dirt from the joining surfaces.
- ✓ Clear color.

## Certifications & Approvals



\*Tested for Low VOC Content at National Lab, Dublin, IRE



## OUTDOOR DRAINAGE CHANNELS

The Technodrain PE-HD drainage system embodies the synthesis of Asoplast experience in the field of drainage. The PE-HD (high density polyethylene) renders it light and immune to climatic and chemical attack, guaranteeing the solidity and inalterability of its structure, thus ensuring the end customers with an innovative product that is easy and safe to install.



A 15



B 125



C 250



D 400

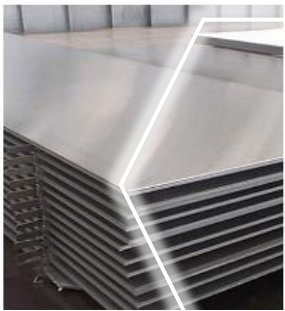


E 600



## TRADING

NEW PACIFIC stands as a pivotal force in the QATAR construction sector. We are manufacturing, trading and supplying a wide range of best and top-class Portable Cabins. Revered not only for its construction prowess, the company also makes significant contributions in the realm of trading. Its commitment to excellence extends beyond construction services, encompassing a robust trading division that plays a vital role in supporting the multifaceted needs of the construction industry





[illegible]



## Construction Tools & Tackles





## LIST OF OUR PROMINENT CLIENT



مؤسسة حمد الطبية  
Hamad Medical Corporation

HEALTH • EDUCATION • RESEARCH صحة • تعليم • بحوث



المستشفى الكوبي  
The Cuban Hospital

عضو في مؤسسة حمد الطبية  
A Member of Hamad Medical Corporation



أركون  
arcon

المتحدون العرب للإنشاءات ذ.م.م.  
arab united construction W.L.L.



3ADR

Contracting & Trading



AL HUDA  
ENGINEERING WORKS



ARIANE  
REAL ESTATE

NEW PACIFIC  
TRADING & CONTRACTING W.L.L.



نيو بيسيفيك  
للتجارة والمقاولات ذ.م.م



Alghanim International General  
Trading & Contracting Co. WLL

CONVERT  
Engineering & Trading



TRADING & CONTRACTING  
AL MASAKEN







**NBK**  
ناصر بن خالد  
NASSER BIN KHALED



**AFFIX** scaffolding  
The Strongest in the Industry



اعمال  
رديمكس  
**AAMAL**  
READYMIX



الكعبي للخرسانة الجاهزة  
**AL-KAABI READY MIX**



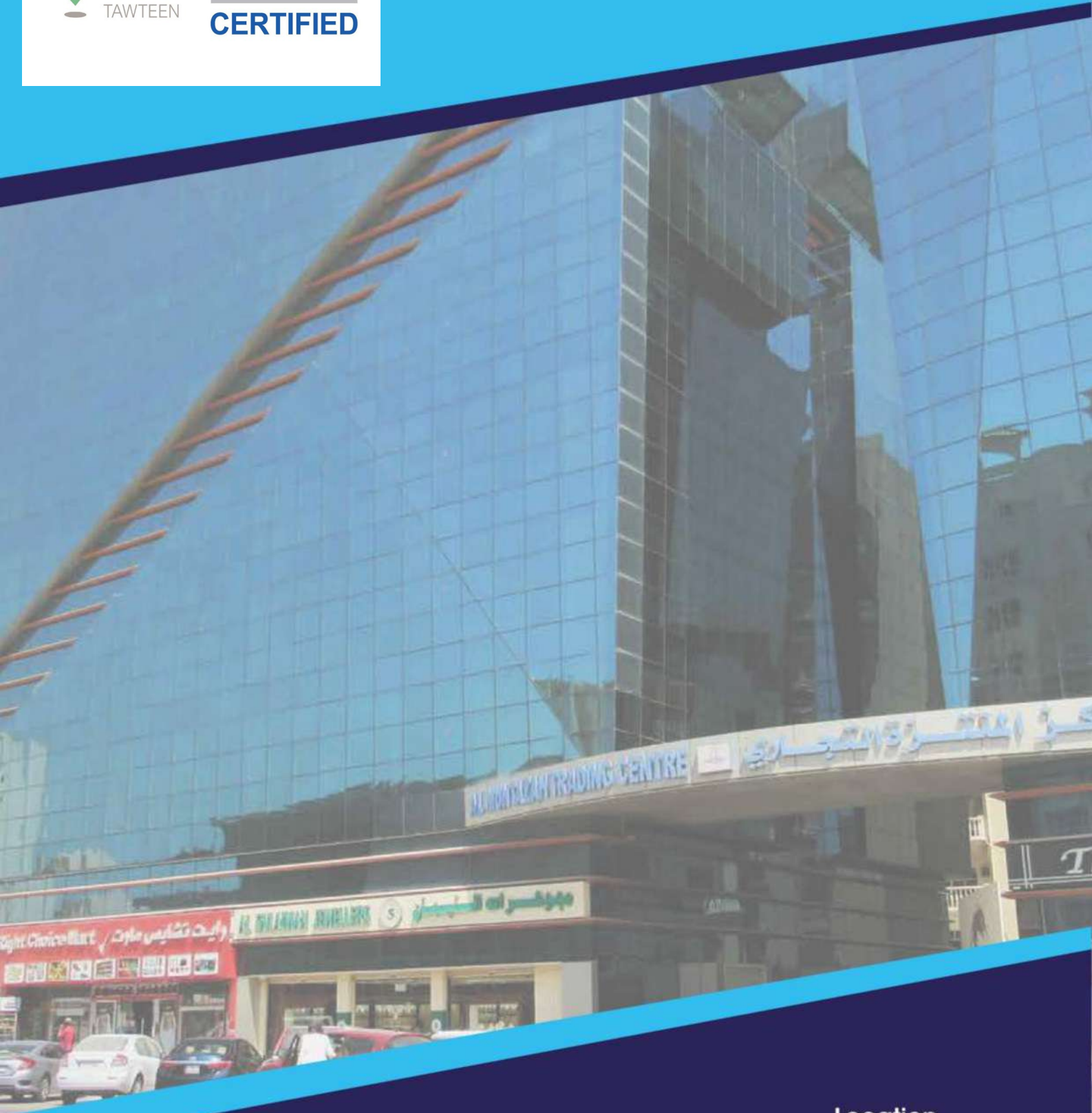
**AL ABLE**

Trading & Contracting

A member of Able International group



**ICV**  
IN-COUNTRY VALUE  
**CERTIFIED**



**Al Muntazah Trading Center**  
Tower#2, Office#110, Floor#6  
P.O.Box# 214071  
Doha - Qatar



**info@nptcwll.com**



**www.nptcwll.com**

**Location**

